



Crow has been a major player in the security market since 1977. The company has now added its deep expertise to the development of video and audio analytics, AI and smart apps for the benefit of residential security and telecare.

Crow's innovative and creative solutions for security and telecare panels and broad portfolio of devices and peripherals are available worldwide through a dynamic distribution network for professional installers as well as central and telecare monitoring stations.

Continuous innovation at Crow is ensured by engineers dedicated to the integration of the latest technologies including on going communication challenges, interoperability CMS / ARC management systems and Cloud services.

Crow proudly combines creativity and expertise to create world-class products and services while complying with the highest standards of quality and reliability.



**YOUR SECURE CHOICE SINCE 1977**

# Contents

<b>1</b>	<b>Shepherd4Care™</b>
3	Shepherd4Care™ Key Features
6	Smart Ecosystem for Telecare
7	Applications
8	Smart Security Analytics
9	Shepherd4Care™ Telecare Panel
10	Audio Verification Module
11	Keypad & Remote Keyfobs
<b>12</b>	<b>Telecare Devices</b>
13	Panic Watch & DECT Pendant
14	Fall Detector
15	Occupancy PIR Detectors
<b>16</b>	<b>Safety &amp; Environmental Devices</b>
17	Smoke Detectors
18	Flood Detector
19	Air Quality Detector
<b>20</b>	<b>Comfort Devices</b>
21	Doorbell
22	Humidity, Temperature & Air Pressure Device
<b>23</b>	<b>Security Devices</b>
24	Indoor PIR & CAM Detectors
25	Outdoor PIR & CAM Detector
26	Magnet & Shock Devices
27	Glass Break
28	Indoor PIR Motion Detector
29	Outdoor PIR Motion Detector
30	Indoor Sounder
31	Outdoor Sounder
<b>33</b>	<b>Wireless &amp; IP Cameras</b>
34	Verification Camera
35	HD IP Camera
36	4K IP Camera with Face Recognition and AI

# Shepherd4Care™

About Crow Telecare

Shepherd4Care™ Key Features

Smart Ecosystem for Telecare

Applications

Smart Security Analytics

Shepherd4Care™ Telecare Panel

Audio Verification Module

Keypad & Remote Keyfobs

## Independent Assisted Living

Independent living is important to many people as they grow older or as they have chronic disabilities, while most want to remain at home even when they need help to manage their daily tasks.

Technology can help seniors to remain at home. Crow uses its expertise in home alarm systems as well as connected devices for smart home to provide adapted devices and solutions for detecting and preventing at-risk situations, monitoring safety and improving quality of life.

## Group Assisted Living

Crow also creates a range of security systems for grouped assisted living. Crow's solutions are designed to ensure flexibility to effectively support independence and enhanced connectivity across residents and care givers.

Thanks to its own R&D and production facilities, Crow can be flexible and design solutions ideally personalized to partners' needs, enhancing their market positioning and end-customer experience.



# Shepherd4Care™ Key Features

Shepherd4Care™ is a new cloud based system for assisted living, telecare, safety and security.

Crow's Shepherd4Care™ solutions give seniors and people in assisted living the independence they want to have while helping them to avoid preventable injuries at home or outdoors. Crow offers a wide portfolio.

This system allows the resident to signal an emergency and to communicate with care providers through an emergency button with 2-way communication.

This system communicates with peripheral devices, and with a backup server in the cloud.

Peripheral devices can include occupancy detectors, fall and bed sensors, two-way voice modules, portable tracking devices as well as security, home comfort and safety products to protect elderly and people in assisted living. In case of an emergency event, immediate help is only a button-press away.

Shepherd4Care™ combines Crow's expertise in security and safety with cloud services, analytics and artificial intelligence to ensure advanced monitoring for families as well as Telecare providers and call centers. It gives the ability to gather digital information for analysis and enables Crow to turn Big Data into Smart Data for the benefit of all.

Shepherd4Care™ includes the following key features:

Smart video motion detection

Artificial Intelligence with Smart detection and recognition

Analysis and Storage for watchlisting and prevention

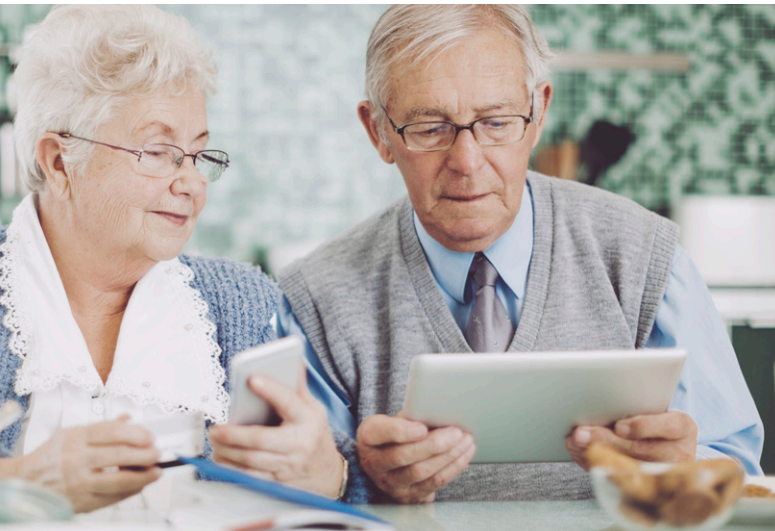
Persons in the scene can be identified against a stored database of faces in real-time or at a later date





## Secured Living

Telecare solutions and sensors are configurable to each home or group living environment. Shepherd4care™ enable to secure elderly persons at home.



## Privacy function

Residents who do not wish to be disturbed can activate the privacy function ensuring that their privacy and independence is not compromised.



## Panic Activation

A dedicated panic trigger will automatically alert family members or a care monitoring station.

## Personal and Proactive Care

Early event detection with immediate alerts enable family or health professionals to quickly take appropriate action.



## Audio Security

Crow's SH-DB is a smart fully wireless burglar preventing doorbell device with two way DECT ULE.

SH-DB is designed to monitor the doorstep anytime while keeping snapshot history. It operates outdoors without Wi-Fi or electricity with a 24-hour battery backup.



## Flexible and Secure Communication

With its multiple communication paths the system is always securely connected for real-time alerts.

Shepherd4Care™ features highly secured and encrypted communication between homes and care monitoring stations.



## Smart Cloud

CrowCloud™ provides full data remote management for care and behavioral monitoring.

## Improved and Efficient Services

Smart analytics enables user behavior to improve services.



## Telecare



Dect Panic Pendant



Panic Watch



Fall Detector



Occupancy Detectors



## Safety



Smoke Detector



Flood Detector

## Shepherd4Care™



## Comfort



Humidity, Temperature & Air Pressure



Doorbell



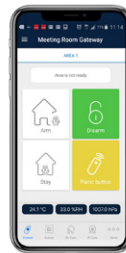
Verification Camera



Audio Voice Module



Keypad & RMT



## Security



Indoor PIR Curtain



Outdoor PIR & Camera



Magnet / Shock



Glass Break



Indoor Sounder



Outdoor Sounder

**+** Rich Ecosystem Integration  
With third parties such as bed sensors or telehealth devices.

**+** SOTA "Software Update Over-The-Air" for easy remote configuration, wireless equipment upgrade and testing



**+** Compatible with Amazon Alexa and Google Assistant.

**+** FOTA "Firmware Over-The-Air" for devices



# Applications

## Security at door entrance



## Secure Intercom (SOS)



## HomeCare



Big data is about both storage and analytics. It gives the ability to gather massive amounts of digital information to analyze, visualize and draw insights that enable prediction and prevention of potential threats.



## **Crow turns Big Data into Smart Data for the benefit of CMS, installers and users**

Intelligent video motion detection

Artificial Intelligence with detection and recognition

Analysis and Storage for watchlisting and prevention

Individuals in the identification scene vs. real-time stored database

Crow has developed security and surveillance applications that perfectly fit either residential or commercial environments.

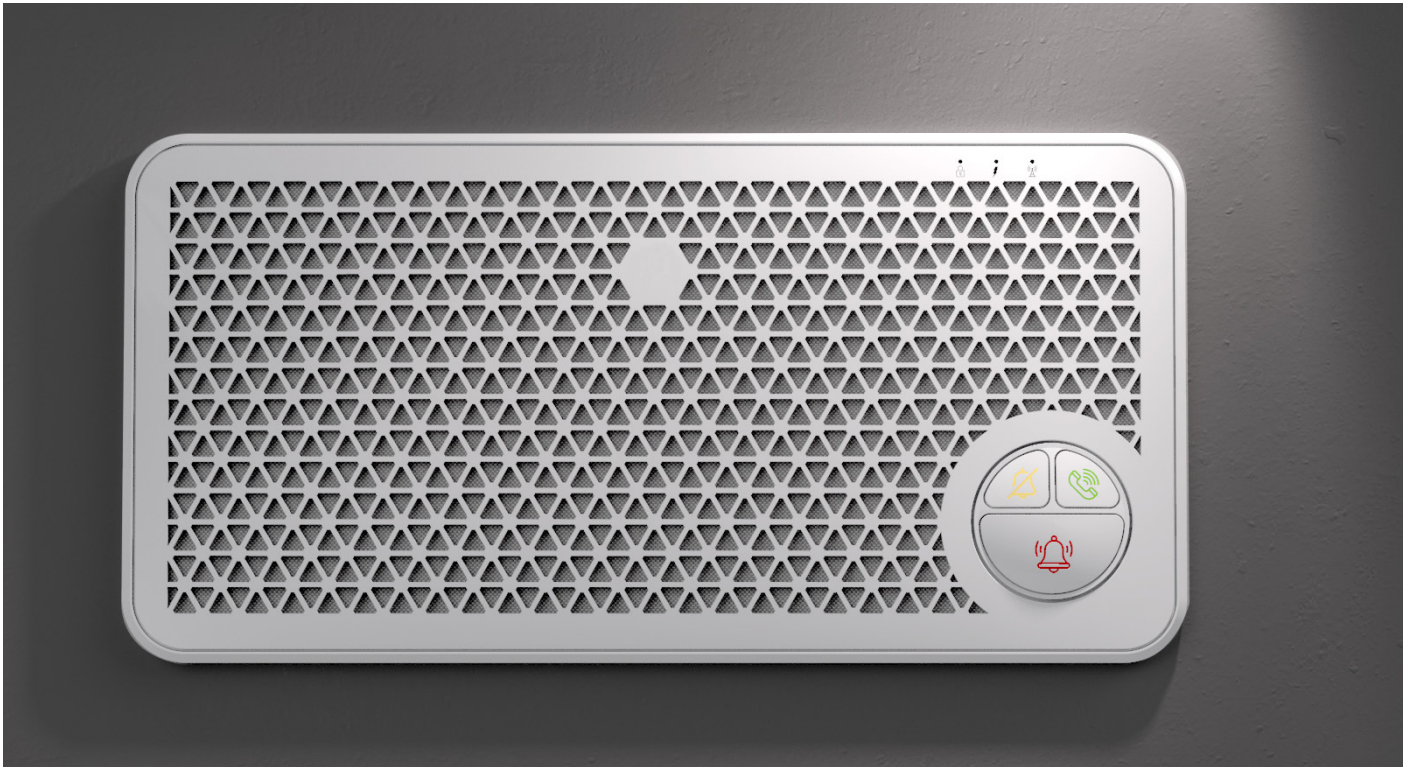
Crow's solutions in the Smart Security market take advantage of the full suite of Crow's analytics algorithms, software and Cloud running on co-located servers, or as a cloud based web service running on public or private cloud.

Crow's analytics make devices truly smart by analyzing content in real-time, extracting metadata, sending out alerts and providing intelligence to the whole security Ecosystem.

We are able to extract just the valid motion in a scene, filtering out noise such as lighting changes and animal motions, thereby reducing false alarms to virtually zero.

Key features include object classification (human/pet/vehicle), intrusion detection and line crossing, people/vehicle counting object left/removed and video summary.

## Telecare Panel



Shepherd4Care™ is an all-in one smart alarm to keep senior safe in their own homes. It facilitates patient's distance care and assistance and care pathway in terms of prevention, compliance and homecare services.

This control panel communicates with a wide range of peripherals such as fall detector, smoke and flood detectors or air quality detector, to provide peace of mind to their customers by sending alert when relevant.

The control panel also includes a main emergency button and a 2-way audio communication capability for the service provider to communicate with the resident. It includes a pill reminder to improve compliance of people to their treatment.

A smartphone application is available for remote activity monitoring by relative.



# SH-AVM

## Audio Verification Module

SH-AVM is an indoor audio verification module. Upon transmission of an alarm signal, the SH-AVM provides remotely controlled and full duplex functionality between a central station operator and the occupants of the premises. Receiving audio verification simultaneously with the alarm signal allows the CMS to prioritize and verify alarms before acting, making the SH-AVM the ideal solution to false dispatching and unverified alarm problems.

Up to 4 modules can easily be installed in any convenient location in your home.



Modulation Type	DECT ULE
Event Transmission	Emergency Voice Call, Low Bat, Keep Alive (every 7 minutes – configurable)
Activation Method	Push-Button for speed dial emergency call
Range	500m open space
Operating voltage	5 Volts DC supplied from wall mount adaptor
Battery	Rechargeable Polymer 3.7V 1000mAh
Current Consumption	Talk Mode: 300mA Up to 3 hours talk time in battery mode Standby: 5mA Up to 1 week in battery mode
LED Indicators	Yellow: Hang Up Green: Pair Status OK Speed dial Red: Pairing/HW problem
Operating Temperature	-10°C to +50°C
Dimensions	104mm x 104mm x 29mm
Weight	150gr
Compliance	CE, FCC Part 15, IC, ETL & ULE

# SH-KP & FW2-RMT

## Wireless Keypad and Remote Keyfobs



SH-KP is the Shepherd™ panel's fully wireless icon keypad with RFID & internal sounder. FW2-RMT is a 4-button two-way wireless keyfob for arming and disarming the Shepherd™ panel with visual LED confirmation.

The FW2-RMT as well as the proximity tags can be attached to a keychain.

	<b>SH-KP</b>	<b>FW2-RMT</b>
Operation Method	Icon LED Keypad & RFID	4 independent and programmable buttons
Communication Protocol	Freewave2™ two-way ISM GFSK with 5 frequencies & LBT	Freewave2™ two-way Protocol GFSK with 5 frequencies & LBT
Frequency Band	868MHz or 916MHz	868MHz or 916MHz
Identification	Unique ID serial number – 24 bit	Unique ID serial number – 24 bit
Proximity Tag	RFID ISO 15693	N/A
Functions	Arm, Disarm, Zone Bypass, Panic Alarm, Chime Local Programming mode (users/tags)	Arm / Disarm Panic Alarm
Communication Range	500m open space	150m open space
Current Consumptions	Average current: 80uA Max Current: 350mA at beeps	Standby: <1 µA Transmission: ~30 mA
Battery	2 x Lithium batteries 1.5V AA Energizer L91	Lithium 3V Size CR2032
Battery Life	Up to 3 years	Up to 5 years
Operating Temperature	-10°C to +55°C	-10°C to +55°C
Dimensions	152mm x 87mm x 28mm	87mm x 38mm x 12mm
Weight	200 gr	20 gr
Compliance	EN50131 Security Grade 2 Class II	EN50131 Security Grade 2 Class II

# Telecare Devices

Panic Watch & DECT Pendant

Fall Detector

Occupancy Detectors

# Panic Devices

## Wireless Panic Watch & DECT Pendant

SH-PANIC Watch and button are advanced water-resistant transmitters with a single button press-and-hold activation and an ergonomic design, ideal for independent and group living people.

DECT Pendant is a Portable 2 Way Wireless Telecare Safety and Audio System allowing people to stay connected and independent at home.

It is ideal for everyday living as well as for emergency.



### SH-PANIC WATCH

### DECT PANIC PENDANT

Operation Method	Single press-and-hold button activation	
Communication Protocol	Freewave2™ two-way ISM GFSK with 5 frequencies & LBT	
Frequency	868MHz or 916MHz	DECT
Identification	Unique ID serial number – 24 bit	
Range	150m open space	
Power Supply	Soldered Lithium battery CR2016 operated	Battery LITHIUM-ION Polymer 3.7V 450mAh
Current Consumption	Standby <1 mA Transmission ~30 mA	
Operating Temp	-10°C to +50°C	
Compliance	CE	CE



# SH-FALL

## Fall Detector

SH-FALL is a DECT Pendant with Voice Announcements for seniors and people with disabilities who want to live at home even if they are predominantly alone. It maintains contact with Family & Friends, reminds its user to take medicine when appropriate and - most notably - has a reliable Fall and Smoke Alarm Detection with automatic alarm handling. Compatible with any standard DECT Base Station at home, the SH-FALL is suitable for sales concepts with and without contract.

Statistically every red-button user suffers from a fall-down accidents 2-3 times per year. This dramatic event is a major medical threat to persons alone at home and is described by medical services as the most important challenge to supply instant professional help. SH-FALL uses a new Fall Detection algorithm ("DPDM") which has excellent reliability and no false alarms. DPDM can distinguish between 'person fall down' and 'product fall down'. Normally an emergency call is not needed for the later event. However it has been proven by practice that the fall down of the product can be the consequence of a medical hazard. SH-FALL considers this effect by monitoring the follow-up actions and triggering emergency call in case the product is not picked up.

This feature is enabled 'ex works' but can be disabled via PC APP. SH-FALL has an elegant and modern design. Anyone who has trouble getting around, or who can't (or doesn't want to) get up to answer the door can also inform a visitor that it will take a while for them to respond to the Doorbell.



### SH-FALL

Functions	DECT Pendant, voice announcement and fall detection
Physical characteristics	Status LED Loudspeaker Call Button High-Sensitive Microphone Vibration IP64
Design	Necklace (80cm)
Weight	41g
Battery Type	Li Polymer 450mAh
Charging	Contactless Qi Charger
Communication	Audio : full-duplex hands-free communication Voice announcements : application sensitive user assistant in native language Telephony : outgoing/ incoming Telephone Calls
Dect Range	Indoor – up to 50m Outdoor – up to 300m
Hardware	DECT GAP acc. ETSI Standard 300 444 DECT EU, US, Brazil (opt.)
Important Features	Phone book read-aloud function, Reminder Function, Battery and Out of Range Warnings

# Occupancy PIR detectors 90° and 360°

## Wireless Occupancy PIR Detectors

SH-PIR detectors are a fully supervised low current Two Way Wireless PIR detectors, including the advanced Freewave2™ Two way protocol for secure and reliable system operation. Full communication administration (Supervision, Tamper, Low Batt.) as well as test transmission signals (Communication, Tamper, Alarm).



### SH-PIR-90

### SH-PIR-360

Detection Method	Quad Pyro Element Sensor	Quad Pyro Element Sensor
Communication Protocol	Freewave2™ two-way ISM GFSK with 5 frequencies & LBT	Freewave2™ two-way ISM GFSK with 5 frequencies & LBT
Operating Frequencies	868MHz or 916MHz	868MHz or 916MHz
Detection Pattern	90° Wide angle with mirror optics	360° Fresnel
Installation	Wall / Corner mounting between 1.8m to 2.4m	Ceiling mounting up to 2.7m
Pet Immunity	Up to 25kgs	-
Identification	Unique ID serial number – 24 bit	Unique ID serial number – 24 bit
Events Transmission	Alarm, Tamper, Supervision, Low Bat, Keep Alive.	Alarm, Tamper, Supervision, Low Battery
Supervision Time	7 min by default (configurable between 1 to 30 min)	7 min by default (programmable between 1 to 30 min)
Communication Range	500m open space	500m open space
Battery	3V Type CR123A Lithium	
Battery life	Up to 5 years	Up to 5 years
Current Consumptions	Standby ~11µA Receive mode ~24 mA Transmit mode ~45 mA	Standby ~11µA Receive mode ~24 mA Transmit mode ~45 mA
Tamper Switch	Front Cover and Wall Removal	Ceiling bracket removal
Operating temperature	-10°C to +50°C	-10°C to +50°C
Dimensions	112mm x 58mm x 45mm	108mm x 53mm
Weight	120 gr.	110 gr
Compliance	EN50131 Security Grade 2 Class II	EN50131 Security Grade 2 Class II

# Safety & Environmental Devices

Smoke Detectors

Flood Detector

Air Quality Detector

# FW2-SMK & SH-SMK

## Wireless Smoke Detectors

Crow's Smoke detectors are built with an advanced optical sensing photoelectric chamber and offer 10 years of battery life.

FW2-SMK & SH-SMK are cutting edge in fire safety. They sound an on-board siren, communicate through apps, and deliver alerts to your phone or other mobile device if an alarm occurs.



### FW2-SMK

### SH-SMK

Detection Method	Photoelectric Smoke Detector	Photoelectric Smoke Detector
Communication Protocol	Freewave2™ two-way ISM GFSK with 5 frequencies & LBT	Freewave2™ two-way ISM GFSK with 5 frequencies & LBT
Frequency Band	868MHz or 916MHz	868MHz or 916MHz
Identification	Unique ID serial number – 24 bit	Unique ID serial number – 24 bit
Event Transmission	Alarm, Tamper, Supervision, Low Bat Supervision	Alarm, Tamper, Supervision, Low Bat Supervision
LED Indications	LED during alarm	LED during alarm
Tamper Switch	Bracket Removal	Bracket Removal
Communication Range	500m in open space	500m in open space
Detection Sensitivity	2.3+1.2%/ft	2.3+1.2%/ft
Alarm Sound Level	85 dB at 3 m Audible Warning Built-in horn	85 dB at 3 m Audible Warning Built-in horn
Battery	Battery pack Lithium 3V/3500mAh	2x Lithium battery 1.5V AA Energizer L91
Battery Life	10 years	10 years
Current consumption	Average : 15uA	Average : 15uA
Operating Temperature	-10°C to +55°C	-10°C to +55°C
Dimensions / Weight	124.3mm x 30mm / 200gr	124.3mm x 30mm / 200gr
Compliance	EN14604	EN14604

# SH-FLOOD

## Wireless Flood Detector

SH-FLOOD is a two way wireless Flood Detector designed to detect water leaks in kitchens, bathrooms warehouses or yachts. Installation is easy and provides an early warning of developing leaks.



### SH-FLOOD

Detection Method	External golden contacts pins device
Communication Protocol	Freewave2™ two-way ISM GFSK with 5 frequencies & LBT
Frequency Band	868MHz or 916MHz
Identification	Unique ID serial number – 24 bit
Event Transmission	Alarm, Tamper, Supervision, Low Batt Supervision
LED Indications	Red LED during alarm
Tamper Switch	Front Cover Removal
Supervision Time	7 min by default (programmable between 1 to 30 min)
Communication Range	500m open space
Current Consumption	Average: 7uA
Transmission current	55mA
Battery	2x Lithium battery 1.5V AA Energizer L91
Battery Life	Up to 5 years
Operating Temperature	-10°C to +55°C
Dimensions / Weight	63mm x 23.3mm x 63mm / 100 gr
Compliance	CE

# SH-AQ

## Air Quality Sensor

SH-AQ enables you to take control of home air quality.

Indoor air quality is affected by smoke and volatile organic chemicals (VOCs).

Home building materials and furniture may also release these VOCs.

In the process of trying to secure your home by locking doors and keeping the windows shut you may inadvertently seal in carbon dioxide. Furnaces and other wood-fueled heaters also produce carbon monoxide while high humidity contributes to poor air quality.



### SH-AQ

Operation Method	Air Quality Sensor
Communication Protocol	Freewave2™ two-way ISM GFSK with 5 frequencies & LBT
Frequency Band	868MHz or 916MHz
Identification	Unique ID serial number – 24 bit
Events Transmission	Air Quality Alert, Tamper protection, Low Battery
Supervision Time	7 min by default (configurable)
Tamper Switch	Front cover removal & Back tamper
Range	500m open space
Battery	2x Lithium battery 1.5V AA Energizer L91
Battery Life	up to 3 Years
Current Consumption	Average 110uA
Transmission current	~55mA
Operating Temperature	-10°C to +55°C – Accuracy ±1°C
Relative Humidity Range	0 to 100% - Accuracy ±9 % RH (±2 % Hysteresis)
Pressure Range	300 - 1100 hPa – Accuracy ±1.0 hPa
Dimensions / Weight	63 mm x 63 mm x 19.60 mm / 40 gr.
Compliance	CE

# Comfort Devices

Doorbell

Humidity, Temperature & Air Pressure Device

# SH-DB Doorbell

## Audio Security Burglar Preventing Device

Crow's SH-DB is a smart fully wireless doorbell burglar preventing device with two way audio DECT ULE. Audio is routed over GSM from the device to the smartphone for audio verification. Smart recorded messages enable to trigger a discussion while the panel calls the user who is not at home or not willing or able to answer.

When used with Crow's cameras, day and night high definition images will be sent for video verification.

SH-DB is designed to watch your doorstep anytime while keeping snapshot history.

It operates outdoors without Wi-Fi or electricity with a 24-hour battery backup.



### SH-DB Doorbell

Power supply	6-36 VDC supply, 500Ma or, 8~24 VAC
Back up	24h Lithium ion rechargeable battery
IP rating	IP65
Backup Battery	Battery pack Rechargeable Li-On 3.7V/250mAh
Dimensions / Weight	112mm x 39mm x 22mm / 100gr
Compliance	CE



# CR-DU-HUM

## DECT ULE Humidity, Temperature & Air Pressure Device

CR-DU-HUM is the ideal solution for monitoring humidity, temperature and air pressure conditions of your home wine cellar and more.

Collected data is displayed on the devices built-in LCD display and automatically pushed to the cloud which allows it to be streamed to web browsers and mobile devices and to set configure alert ranges.



### SH-DU-HUM

Modulation Type	DECT ULE
Event Transmission	Alarm, Tamper, Low Bat, Keep Alive (every 7 minutes – configurable)
Detection Method	Humidity, Temperature & Air Pressure Sensor
Range	500m open space
Battery	Lithium 3V, CR123A
Battery life	Up to 3 Years
Current Consumptions	Average: 30uA
LED Indicators	Red LED: ON – Pairing/HW problem Green LED: Pair Status OK
Operating Temperature	0°C to 45°C
Dimensions / Weight	95mm x 50mm x 34mm / 150 gr
Compliance	CE, FCC Part 15, IC, ETL & ULE



# Security Devices

Indoor PIR & CAM Detector

Outdoor PIR & CAM Detector

Magnet & Shock Devices

Glass Break

Indoor PIR Motion Detectors

Outdoor PIR Motion Detector

Indoor Sounder

Outdoor Sounder

# SH & FW2-PIRCAM-IN

## Wireless Indoor PIR & Camera Detectors

Crow's Indoor PIRCAMS are two-way wireless motion detectors with built-in CMOS high quality color cameras. They provide an ideal solution for video verification via pictures transmitted to a CMS or to your mobile phone via CrowPro Apps. Both users and CMS can verify alarms day and night by viewing real-time color images captured by Crow's PIRCAMS for fast and accurate response to real alarm events. They can be configured Over-The-Air.



	<b>SH-PIRCAM</b>	<b>FW2-PIRCAM</b>
Detection Method	Quad Pyro Element Sensor & CMOS HDR Camera	Quad Pyro Element Sensor & CMOS camera
Optics	Mirror Optics and Creep Zone	Fresnel Optics
Communication Protocol	Freewave2™ two-way ISM GFSK with 5 freq. & LBT	Freewave2™ two-way ISM GFSK with 5 freq. & LBT
Operating Frequencies	868MHz or 916MHz	868MHz or 916MHz
Identification	Unique ID serial number – 24 bit	Unique ID serial number – 24 bit
CAM Resolution	VGA or QVGA	VGA or QVGA
CMOS Sensitivity	16VLux/sec	16VLux/sec
Picture Mode & Resolution	Configurable VGA / QVGA	Configurable VGA / QVGA
Detection Range	12 m	12 m
Events Transmission	Alarm, Tamper, Supervision, Low Bat, Keep Alive	Alarm, Tamper, Supervision, Low Bat, Keep Alive
Supervision Time	7 min by default (configurable between 1 to 30 min)	7 min by default (configurable between 1 to 30 min)
Transmission Range	500m open space	500m open space
Pet Immunity	Up to 25 kg	Up to 25 kg
Battery	2 x Lithium batteries 1.5V AA Energizer L91	3 Lithium battery 3V CR123
Battery life	Up to 5 years	Up to 5 years
Current Consumption	Receive mode ~26 mA Transmit mode ~52 mA	Receive mode – 24mA Transmit mode – 38mA
Tamper Switch	Front Cover and Wall Removal	Front Cover and Wall Removal
Operating temperature	-10°C to +55°C	-10°C to +55°C
Dimensions/Weight	112mm x 58mm x 45mm / 120 gr.	129.5mm x 67.4mm x 52mm / 200gr
Compliance	EN50131 Security Grade 2 Class II	EN50131 Security Grade 2 Class II

# FW2-PIRCAM-OUT

## Wireless Outdoor PIR & Camera Detector



### FW2-PIRCAM-OUT

Detection Method / CAM Resolution	Quad PIR & CMOS Camera with VGA or QVGA
Communication Protocol	Freewave2™ Two Way ISM GFSK with 5 frequencies & LBT
Frequencies	868MHz or 916MHz
Identification	Unique ID serial number
Events Transmission	Alarm, Tamper, Supervision, Low Bat
Communication Range	500m open space
Detection Range	12 m
Pet Immunity	With Mask
Detection Mode Sensitivity (configurable)	"Take Picture" mode: ≥ 16 VLux/sec – Color Picture ≤ 16 VLux/sec – B&W Picture with IR LED "Alarm" mode: B&W or VGA/QVGA Color picture
Battery Life	Up to 7 years
Current Consumption	Average Current : 200uA
Battery	2 x 3.6V /13Ah Lithium ,D-Size (ER3415M)
Operation Temperature	-25°C ~ +55 °C
IP Rating	IP 65
Dimensions	135mm x 75mm x 70mm
Weight	400gr
Compliance	EN50131 Security Grade 2 Class II

# SH-MAG and SH-MAG & SHOCK

## Wireless Door/Window Magnet Shock Contact Devices

These devices provide perimeter protection for premises with early warning upon attempted intrusion.

SH-MAG & SHOCK device analyzes shocks while ignoring background vibrations.

They can be configured Over-The-Air and feature a 5 year battery life.



### SH-MAG

### SH-MAG & SHOCK

	SH-MAG	SH-MAG & SHOCK
Detection Method	Magnetic Contact	Magnetic contact and Shock
Communication Protocol	Freewave2™ two-way ISM GFSK with 5 frequencies & LBT	Freewave2™ two-way ISM GFSK with 5 frequencies & LBT
Operating Frequencies	868MHz or 916MHz	868MHz or 916MHz
Identification	Unique ID serial number – 24 bit	Unique ID serial number – 24 bit
Events Transmission	Alarm, Tamper, Supervision, Low Bat, Keep Alive.	Alarm, Tamper, Supervision, Low Bat, Keep Alive.
Supervision Time	7 min by default (configurable between 1 to 30 min)	7 min by default (configurable between 1 to 30 min)
Transmission Current	55mA	55mA
Battery	2 Lithium batteries AAA 1.5V Type L92	1 Lithium batteries CR123
Battery life	Up to 5 Years	Up to 5 Years
Current Consumption	Average: 6uA	Average: 9uA
Tamper Switches	Front Cover and Wall	Front Cover and Wall
Operating temperature	-10°C to +55°C	-10°C to +55°C
Dimensions / Weight	100mm x 26mm x 16mm / 50gr.	100mm x 26mm x 16mm / 50gr.
Compliance	EN50131 Security Grade 2 Class II	EN50131 Security Grade 2 Class II

# SH-GBD

## Wireless Glass Break Detector

SH-GBD is an Omni-directional Wireless Glass Break Detector providing a detection coverage of 180°. It can be configured Over-The-Air.



### SH-GBD

Detection Method	Omni-directional Shock & Glass Break
Communication Protocol	Freewave2™ two-way ISM GFSK with 5 frequencies & LBT
Frequency	868MHz or 916MHz
Identification	Unique ID serial number – 24 bit
Events Transmission	Alarm, Tamper, Supervision, Low Bat.
Supervision Time	7 min by default (configurable)
Range in open space	500m
Coverage Area	Up to 6m - 180° radius
Battery	2 x Lithium batteries 1.5V AA Energizer L91
Battery life	Up to 5 years
Current Consumption	Average 12uA
Transmission current	~55mA
Tamper Switch	Back Tamper (Removal)
Operating temperature	-10°C to +55°C
Dimensions / Weight	63mm x 63mm x 19.60mm / 120 gr.
Compliance	EN50131 Security Grade 2 Class II

# SH-PIR & SH-PIR-CRT

## Mirror Optics Wireless PIR & Curtain PIR Detectors

SH-PIR is fully a supervised mirror optics two-way wireless detector featuring motion detection, tamper protection, low battery and supervision.

SH-CRT is a wireless detector featuring a solid curtain coverage of up to 8m length by 3m height. The device may be used for perimeter protection by setting up detection "curtains" walls or windows.

SH-PIR & SH-CRT can be configured Over-The-Air.



	<b>SH-PIR</b>	<b>SH-PIR-CRT</b>
Detection Method	Quad Pyro Element Sensor	Quad Pyro Element Sensor
Communication Protocol	Freewave2™ two-way ISM GFSK with 5 frequencies & LBT	Freewave2™ two-way ISM GFSK with 5 frequencies & LBT
Operating Frequencies	868MHz or 916MHz	868MHz or 916MHz
Identification	Unique ID serial number – 24 bit	Unique ID serial number – 24 bit
Events Transmission	Alarm, Tamper, Supervision, Low Bat, Keep Alive.	Alarm, Tamper, Supervision, Low Battery
Supervision Time	7 min by default (configurable between 1 to 30 min)	7 min by default (programmable between 1 to 30 min)
Communication Range	500m open space	500m open space
Battery	3V Lithium CR123A	3V Lithium CR123A
Battery life	Up to 5 Years	Up to 5 Years
Current Consumptions	Average Current : 15uA Transmit current: ~55mA	Average Current : 15uA Transmit current: ~55mA
Tamper Switch	Front Cover and Wall Removal	Front cover removal & Back tamper
Operating temperature	-10°C to +50°C	-10°C to +50°C
Dimensions/ Weight	112mm x 58mm x 45mm / 120 gr.	108mm x 58mm x 42.5mm / 120 gr.
Compliance	EN50131 Security Grade 2 Class II	EN50131 Security Grade 2 Class II

# FW2-EDS3000 AM

## Wireless Double PIR and Anti-Masking Outdoor Detector

FW2-EDS3000AM is a unique two-way wireless outdoor double motion detector with active Anti-Masking feature. This device is designed to protect the outdoor areas of your property and triggers an alarm before an intruder breaks in.



### FW2-EDS3000 AM

Detection Method	Two Double Pyro and Antimasking
Communication Protocol	Freewave2™ two-way ISM GFSK with 5 frequencies & LBT
Operating Frequencies	868MHz or 916MHz
Events Transmission	Alarm, Anti-Mask, Tamper, Supervision, Low Bat
Supervision Time	7 min by default (configurable between 1 to 30 minutes)
Communication Range	500m open space
Battery	4 x Lithium battery 1.5V AA Energizer L91
Battery life	Up to 10 years
Current Consumption	Average 60uA
Tamper Switch	Front Cover and Wall Removal
Transmit Power	~ 14dBm
Temperature Compensation	Yes
LED Indicator	LED is ON during Alarm and Trouble
Operation Temp	-35°C ~ +55°C
IP Rating	IP 65
Dimensions / Weight	200mm x 86mm x 80mm / 500gr.
Compliance	EN50131 Security Grade 3 Class III



# SH-SIRINT

## Wireless Indoor Sounder

SH-SIRINT is a fully supervised wireless siren. Its slim and compact design blends into the decor and provides an alert to a potential danger. It also indicates entry and exit delays, trouble beeps and door chimes.

SH-SIRINT can be configured Over-The-Air.



### SH-SIRINT

Communication Protocol	Freewave2™ two-way ISM GFSK with 5 frequencies & LBT
Operating Frequencies	868MHz or 916MHz
Identification	Unique ID serial number – 24 bit
Events Transmission	Alarm, Tamper, Supervision, Low Bat.
Supervision Time	7 min by default
Transmission Range	500m open space
Alert Method	Internal Piezo and LED
Sound Level	85dB at 1 meter
Flash Light	White LED
Battery	2 x Lithium battery 1.5V AA Energizer L91
Battery life	Up to 5 years
Current Consumption	Average Current : ~60uA    Max Current: Alarm 750mA
Tamper Switch	Bracket Removal
Operating temperature	-10°C to +55°C
Dimensions / Weight	93 mm x 93mm x 26mm / 80gr.
Compliance	EN50131 Security Grade 2 Class II

# FW2-NEPTUNE

## Wireless Outdoor Sounder

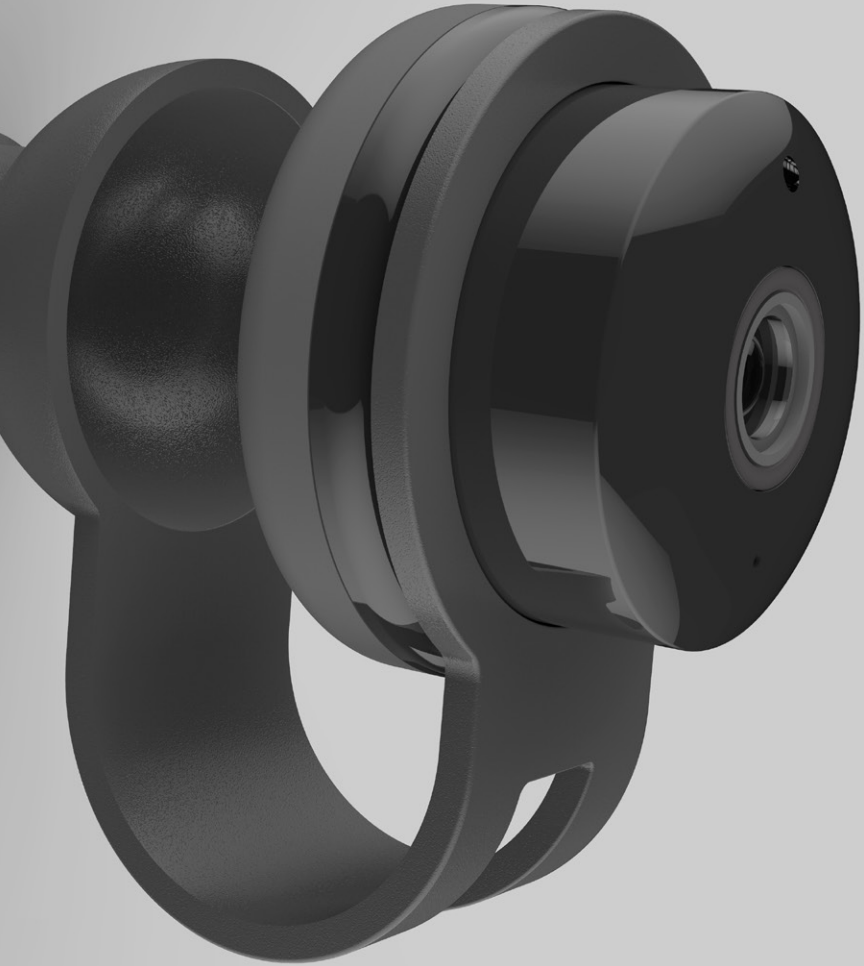
FW2-Neptune is a wireless two-way self-powered outdoor siren. It features fully supervised communication highly reliable operation and optimal wireless performance, including visual and audio notifications.

FW2-Neptune can be configured Over-The-Air.



### FW2-NEPTUNE

Communication Protocol	Freewave2™ two-way ISM GFSK with 5 frequencies & LBT
Frequency Band	868MHz or 916MHZ
Identification	Unique ID serial number – 24 bit
Range	500m open space
Sound Pressure Level	105dB
Siren Tone	yelp
Frequency Range	2700 ± 500 Hz
Indications	Flash LED during transmission (Arm/Disarm) and Activation
Flash Light	Power LED (90 Lumens)
Current Consumption	Standby Average: 110uA, External power 9-12 VDC standby 3mA, Alarm 0.83A
Power Supply	9V-15V / 2A
Siren Alarm Period	2 min/15 min (programmable)
Arm/Disarm Indication	LED Flash : Arm-1 Disarm-3 LED Flash with Beeps : Arm-1 Disarm-3
Supervision	Sync signal every 1 min
Tamper Switch	Normally Closed
Battery	Battery pack Lithium 3.6V / 13Ah
Battery Life	Up to 5 years (Based on 2 min Piezo operation/month)
Low Battery Level / Indication	3.1V / LED Flash @ Arm/Disarm
LED Indicator	LED is ON during ALARM and TROUBLE
Operation Temp	-40°C to +70°C
IP Rating	IP 55
Dimensions / Weight	310 mm x 205 mm x 75 mm / 1.2 Kg (Without Battery)
Compliance	EN50131 Grade 2 Class IV



# Wireless & IP Cameras

Verification Camera

HD IP CAMERA

4K IP CAMERA with Face recognition and AI

# SH-CAM

## Verification Camera

Crow's SH-CAM is a two-way wireless CMOS camera for day and night high quality color pictures.

The SH-CAM can be tied to other Shepherd™ security or safety peripherals such as PIR, smoke or flood detectors or doorbells.

It can also be linked with Telecare Fall detectors for visual event verification.

It is battery operated and ideal for CMS, Telecare or by authorized users.

The SH-CAM like all any other Shepherd™ peripherals can be configured Over-The-Air.



### SH-CAM

Communication Protocol	Freewave2™ two-way ISM GFSK with 5 freq. & LBT
Camera sensor	VGA/QVGA, 16V lux/sec, field of view 90°
Battery	2 x Lithium batteries 1.5V AA
Night Vision	High-power White LED Day and Night high quality color pictures IR cut-off filter
Tamper protection	3 Axis MEMS accelerometer
Transmission Range	500m open space
Operating frequencies	868MHz or 916MHz
Operating Temperature	-10°C to +55°C Weather resistant
Sensors	Ambient light, Temperature, Accelerometer
Dimensions	60mm X 60mm x 45mm
Compliance	CE

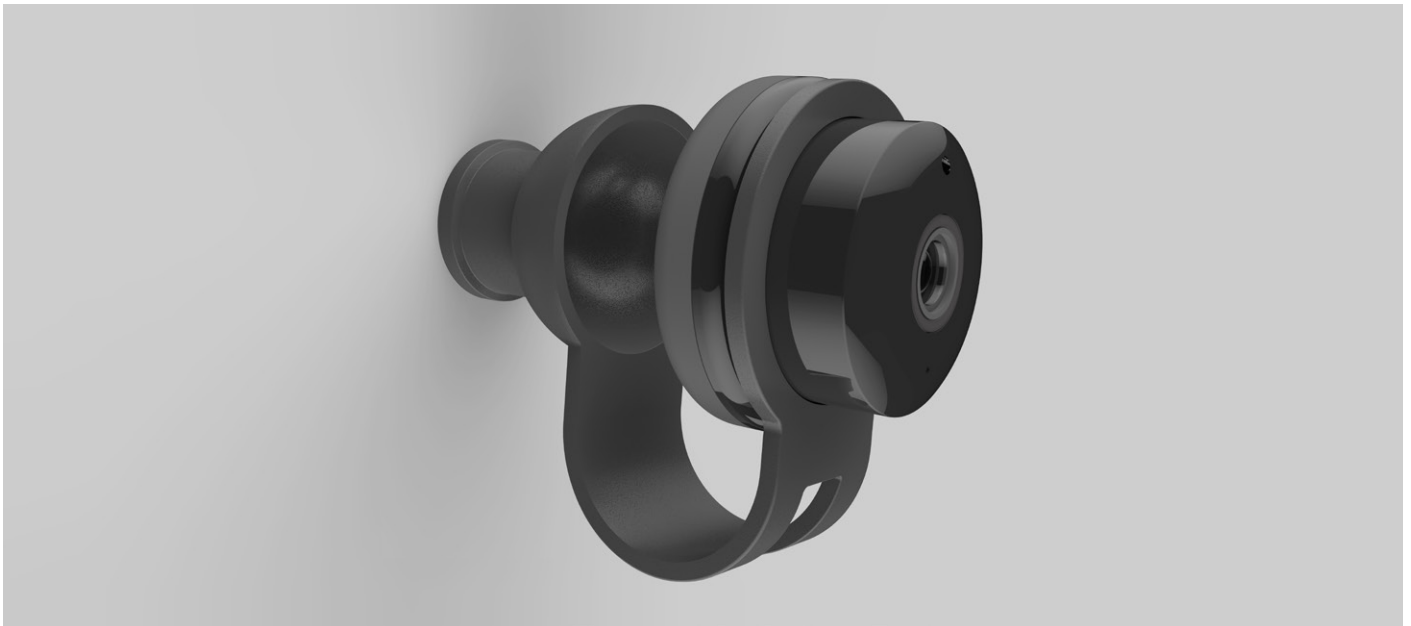
# SH-HD-IPCAM

## HD IP Camera

The SH-HD-IPCAM Indoor Camera features a super clear 1080p HD and a built-in speaker and microphone.

The SH-HD-IPCAM offers verification with HD video streams to CrowCloud™.

Users can view on demand or on alarm real-time H.264 video streaming for fast and accurate response to real events.



### SH-HD-IPCAM

Camera resolution	1080p
Video	H.264 encoding
Storage	Support 128GB micro SD card(max)
Field of view	110° diagonal wide-angle view
Night Vision	High-power IR LED
Audio	Built-in microphone and speaker
Wireless	802.11b/g/n/ 2.4GHz
Sensors	Ambient light, Temperature
Power supply	Power adapter input: 100-240V AC, 50/60Hz Power adapter output: 5V DC, 1A
Connectivity requirements	Wi-Fi internet connection (B/G/N)
Operating Temperature	-10° to 55°C indoor
Dimensions	83.5mm x 58mm x 94.1mm
Compliance	CE

## 4K IP CAMERA with Face Recognition and AI

The SH-4K-IPCAM offers video surveillance and verification with high quality 4K video streams to CrowCloud™. Users can view on demand or on alarm real-time H.265 and H.264 video streaming for fast and accurate response to real events.

The SH-4K-IPCAM supports video analytics and AI for fall detection, person/pet/vehicule identification face and emotion recognition.



### SH-4K-IPCAM

Camera sensor	Low-Power 8-Megapixel Sensor 4K color
Video	H.265 and H.264 encoders capable of up to 4Kp30 video Simultaneous multi-streams (5 different streams) Multi-exposure line-interleaved HDR Hardware lens distortion correction Electronic Image Stabilization (EIS) 3-Axis Electronic Image Stabilization (EIS)
Artificial Intelligence Video Analytics	Face recognition - up to 100 faces Intelligent motion detection Tampering / intrusion detection and people counting
Zoom	X12 digital zoom without image quality loss Dynamic region of interest (ROI) with 32 free-form regions
Field of view	140° diagonal wide-angle view
Night Vision	4 High-power IR LED 850 nm, 150° IR cut-off filter
Audio	High-quality speaker and microphone
Wireless	802.11a/b/g/n/ac (2.4GHz/5GHz) WiFi + Bluetooth Module
Sensors	Ambient light, Temperature
Power Supply	Power adapter input: 100-240V AC, 50/60Hz Power adapter output: 5V DC, 2A Power cable connector: USB Type-C
Connectivity requirements	Wi-Fi internet connection (AC/B/G/N)
Operating Temperature	-10° to 55°C indoor
Dimensions	70mm X 70mm X 55mm
Compliance	CE



**CROW ELECTRONIC ENGINEERING LTD.**

12 Kineret Street  
Airport City, 7019900 Israel  
[www.thecrowgroup.com](http://www.thecrowgroup.com)

**CROW LATIN AMERICA**

7855NW 29 St. 150, 2<sup>nd</sup> Floor  
Doral - Florida, 33122, USA  
[www.crowlatinamerica.com](http://www.crowlatinamerica.com)